



ISTITUTO COMPrensIVO G. BERTACCHI

VIA PINDEMONTE 2 - BUSTO ARSIZIO

tel. 0331.631953

segreteria@istitutobertacchi.it - VAIC857005@pec.istruzione.it

www.istitutobertacchi.edu.it



## CIRCOLARE ALUNNI N. 1 A.S. 2020-21 – English version

### ORGANIZATIONAL AND BEHAVIOURAL ANTI-COVID GUIDELINES

In order to ensure everyone's safety, following these guidelines

#### FOR FAMILIES

- Temperature must be taken at home and it is forbidden to enter the school if you have a fever of 37.5°C or higher, or respiratory symptoms (e.g. cough), or any symptoms related to COVID 19.
- Students are required to wear a surgical mask during entry (as required by the Security Manager Engineer Mr. Piatti), exit and movement within the school. Students should have a spare mask in their bags in case of need.
- Daily supply of a plastic bag for personal waste, a packet of disposable handkerchief and a small bottle of disinfectant gel for personal use.
- Check the charge of the backpack according to your teachers' instructions.
- Strict compliance with the entry and exit times of the classes in order to avoid gatherings. The times will be defined according to the number and the arrangement of the classes within the schools.



## AT SCHOOL

-At the entrance, check the school staff's body temperature.



-Use of the surgical mask for the entire duration of the service by the school staff, which can only be lowered if the safety distance of 2 meters from the students is maintained (the support teachers/educators will wear, if necessary, a protective visor, gloves and disposable suit).

-Hands sanitation at the entrance to the classroom, so each classroom and the hall will be provided with hand-washing gel, which students must use before each entry and exit from the classroom (for the use of the toilets and outdoor spaces for the break).



-It is important to wash hands frequently.

-Respect for the social distancing between school staff and students.



-Inside the school building, students must follow the lines and arrows, in order to avoid gatherings.

-Turning for access to toilets. The teacher is responsible for making a note of the student's name who goes to the services, specifying the time of exit from the class.

- Turning for the use of outdoor spaces during the school break.



- Classrooms windows must be open for at least 5 minutes at the end of each lesson. If possible also for the lesson.



- Controlled management of school material which must be limited to what is strictly necessary and communicated to pupils on a daily basis, in order to avoid backpacks that are too full and bulky.



- Assignment of an individual desk to each pupil.



- In case a student doesn't feel well and the body temperature is above 37.5 ° C and he has covid-19 symptoms, parents will be called and have to take him/her home immediately. The possible entry of students who have already tested positive for COVID-19 must be preceded by a prior communication concerning the medical certification, issued by the prevention department responsible for the area, showing that the "tampon negativization" occurred.

## Physical education

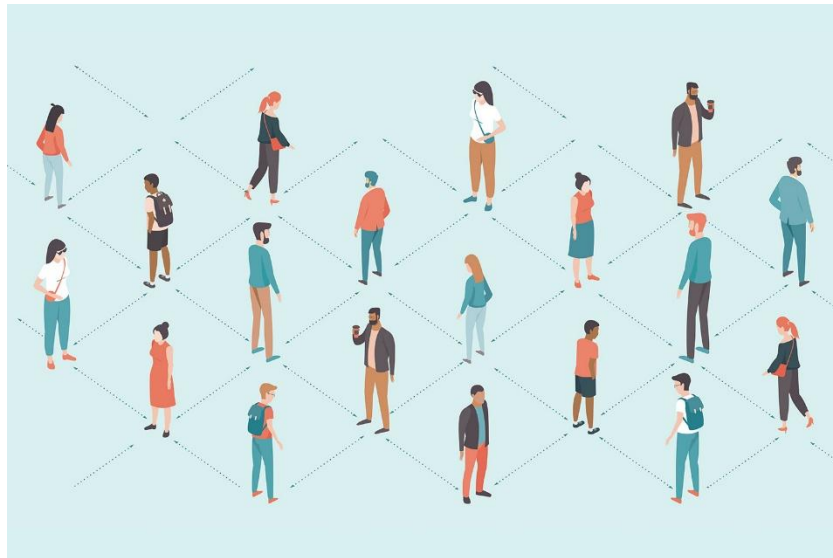
---

- Sports/team games and contact exercises will be prohibited.



- Free body exercises will be allowed, without a mask, as long as it comes maintained the interpersonal distance of at least 2 meters.





- It will not be possible to use the changing rooms, therefore the pupils who have in P.E. timetable will have to show up at school already in sport clothes, wearing only spare shoes.



### **Musical practice**

- The instrument is for personal use only. Keyboards and school pianos will be properly sanitized before and after the use. The ability to access the loan for use of

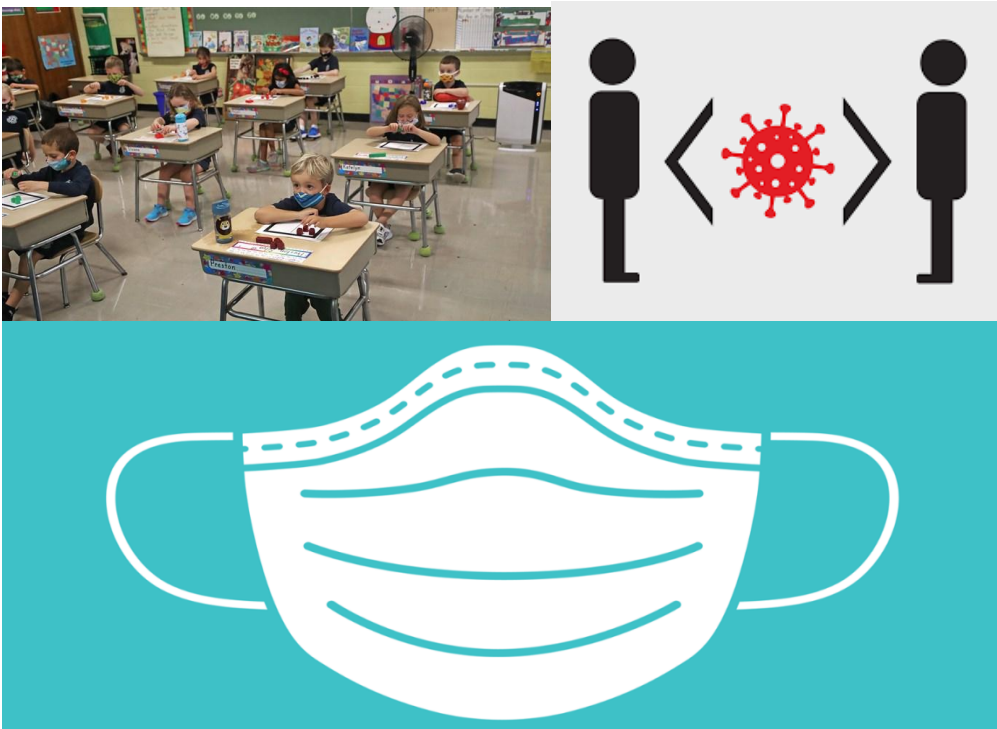
the tools in equipment to the school will be evaluated from time to time.



- Wind instrumentalists must maintain interpersonal distance from at least 2 meters.
- In collective music practice, the stations will be sanitized between one lesson and the other one.

## FOR STUDENTS

They have to wear the mask (preferably of the surgical type, as suggested by the Safety manager Eng. Piatti) at the entrance, while moving around the school spaces and at the exit. When sitting at their desks, students can remove the mask and if the distance is 1 meter between each student and 2 meters between teacher and students. The use of the mask may be necessary even if there is a guaranteed distance (1 meter), if the health authority reported an increased viral circulation.



A Cooperative learning activity carried out by the class 2A, Bellotti School