



IC Bertacchi Busto Arsizio . VA  
Scuola Secondaria di Primo Grado Bellotti



**CLIL ITALY LET'S TALK ABOUT IT!**

***From Monnalisa to Marilyn  
Be creative with technology!***

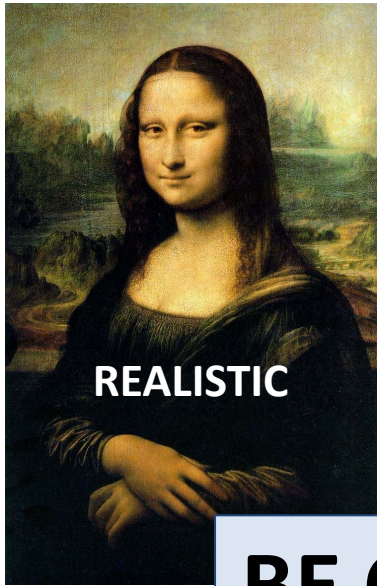
**Progetto CLIL di Arte e Storia dell'Arte**

**di**

**Michela Marcellino**

# From Monnalisa to Marilyn

## Typology of Portraits



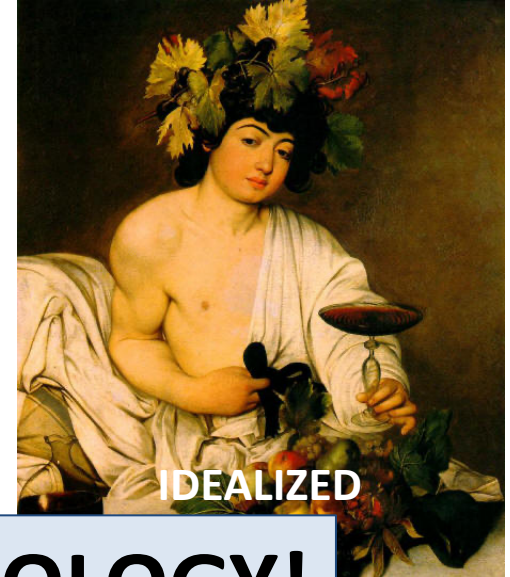
REALISTIC



REALISTIC

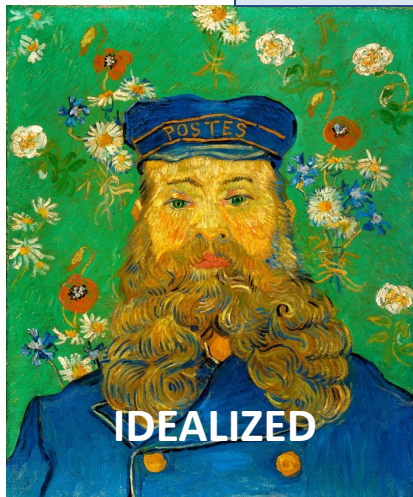


REALISTIC

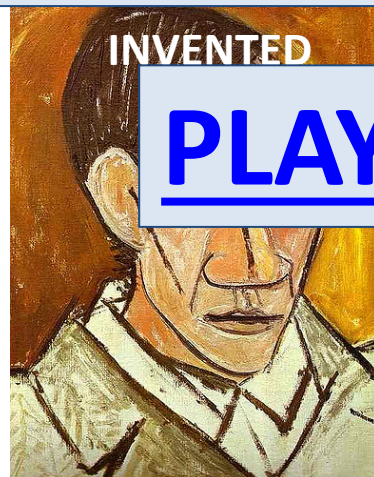


IDEALIZED

**BE CREATIVE WITH TECHNOLOGY!**



IDEALIZED



INVENTED

**PLAY NOW!**



ABSTRACT



INVENTED

The Painter can draw the model  
from different angles

**A FRONT VIEW**

**A PROFILE**

**A THREE QUARTER VIEW**



**PLAY AGAIN!**

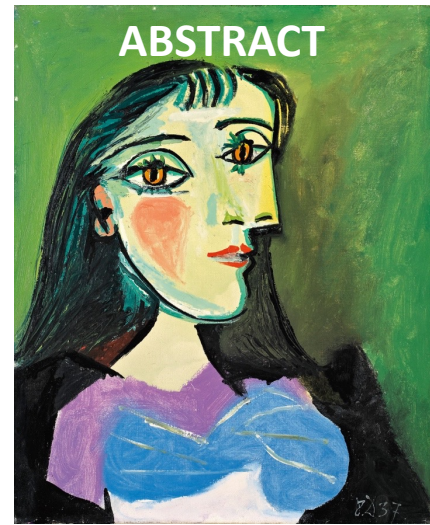
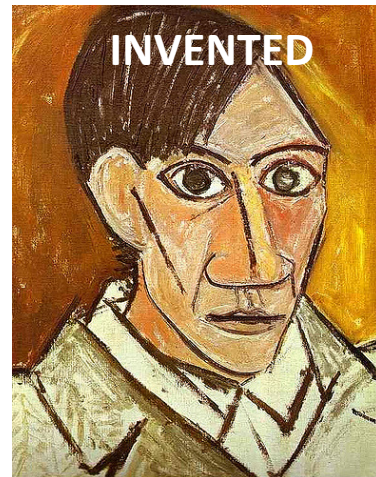
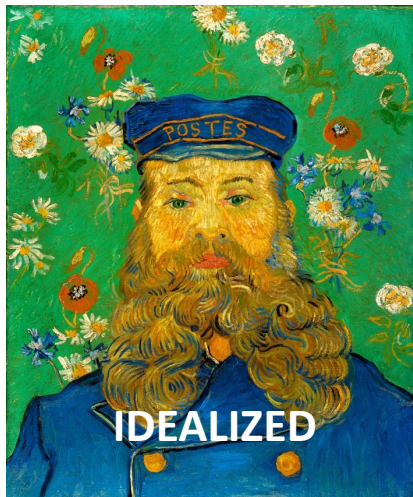
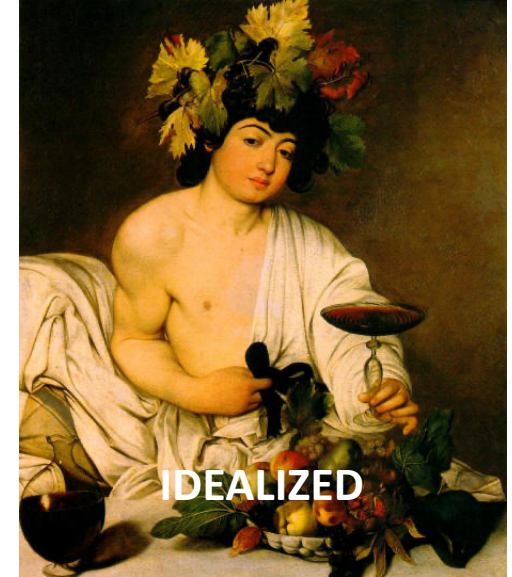
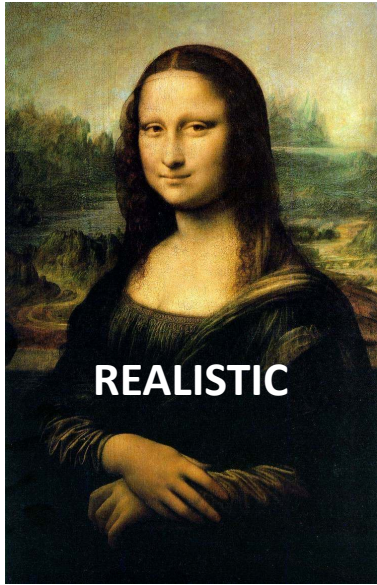
The subject of a **PORTRAIT** is the model

Portraits usually look like the models and are very similar to their real aspects

These kinds of portraits are called **REALISTIC**

When portraits do not look like the models, they are called **ABSTRACT**

# Typology of Portraits



The painting, thought to be a portrait of LISA GHERARDINI, the wife of Francesco del Giocondo. Leonardo da Vinci began painting the *Mona Lisa* in 1503 or 1504 in Florence, Italy. Many people think Mona Lisa's smile is mysterious and enigmatic.

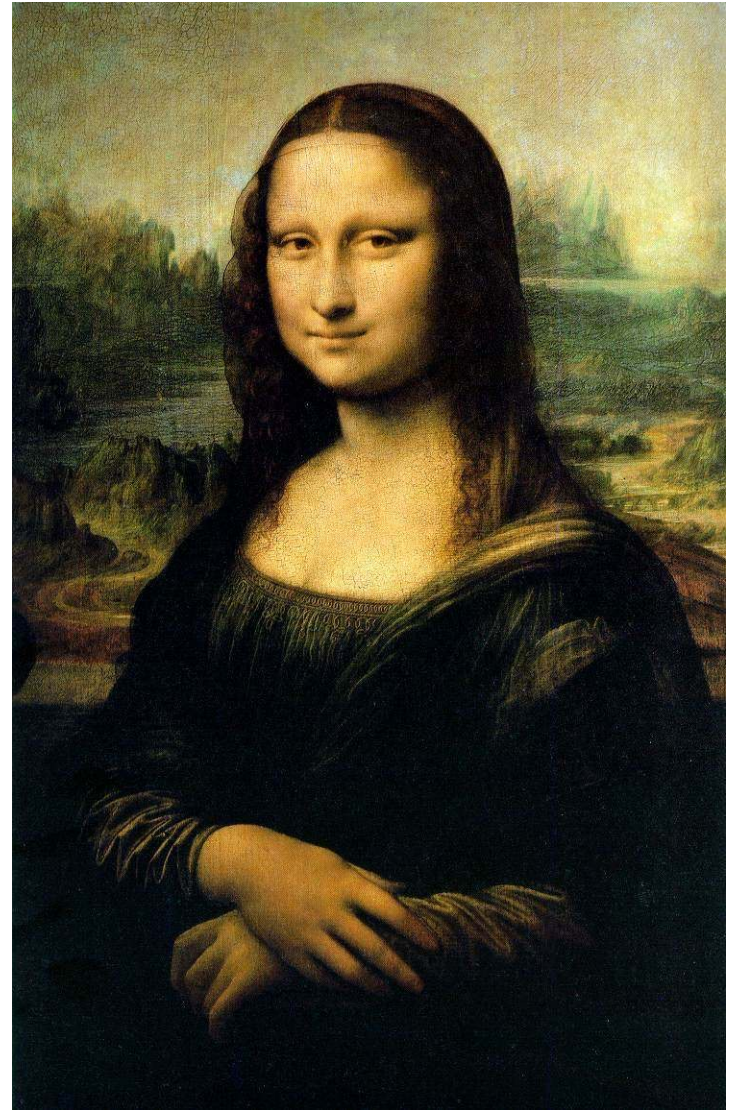
## Background

Landscape

Aerial Perspective

## Foreground

Three quarter view Hands folded



Leonardo Da Vinci *The Monna Lisa*  
1503-1506 – Oil on wood panel  
**Louvre**, Paris - France

# QUESTIONS...

WHAT DOES IT MEAN?

CAN YOU REPEAT IT PLEASE?

PUT THE MISSING WORD

WHAT DO YOU THINK OF IT?

WHY IS....?

WHAT DO YOU FEEL?

WHAT IS HAPPENING?

WHAT CAN YOU SEE?

CAN YOU DESCRIBE?

WHY DO YOU SEE YOURSELF LIKE THAT?

LET ME SEE

POINT - SHOW

# Adjectives

Kind

Soft

Delicate

Beautiful

Ugly

Bright

Bored

Smiling - to Smile

Sad

Weeping - to Cry

Serious

Mysterious

Enigmatic

Detached

Complex

Harsh

Angry

Cruel

Nervous

Relaxed

Simple

Complete - un finished



# Artistic Techniques

Oil on canvas

Oil on wood panel

Drawing

Sketch

Frescos

Watercolours

Collage

Paper mache

Serigraphy

Sculpture: Clay, Marble,  
Bronze

# Materials

Canvas

Palettes

Paints

Brushes

Pencils

Pens

Rubber – Putty

Pencil Sharpener

Scissors

Glue

Ruler

Compass

Drawing Sheet - Rough

Paper - Smooth paper

Cardstock -Cardboard

Ink

Watercolours

# Different Background



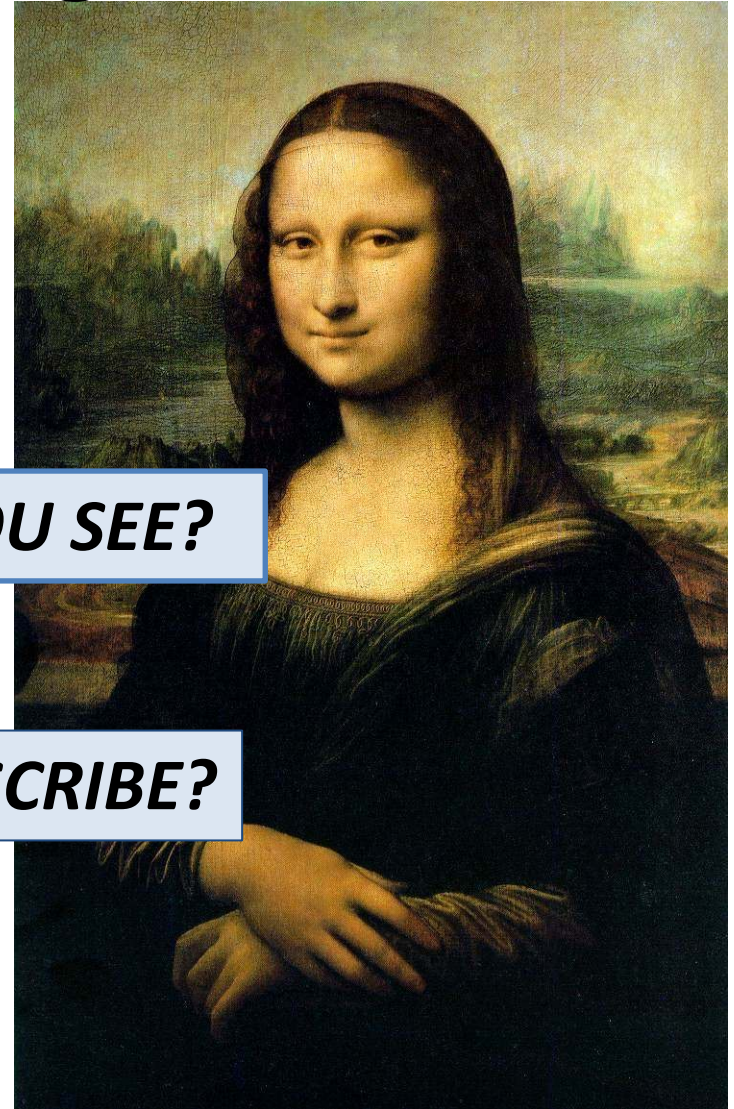
**WHAT CAN YOU SEE?**

**CAN YOU DESCRIBE?**

Jan Vermeer *Girl with a Pearl Earring*

1503 - Oil on canvas

Mauritshuis - Netherlands

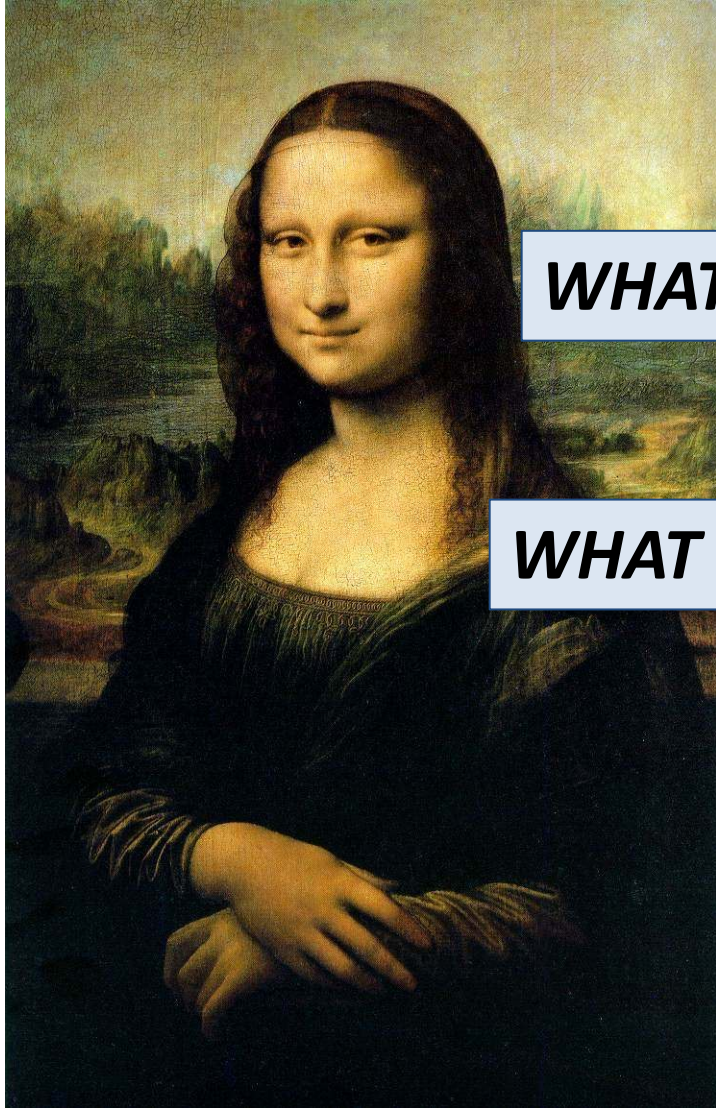


Leonardo Da Vinci *The Monna Lisa*

1503 -1506 - Oil on wood panel

Louvre, Paris

# Similar Position: Three quarter view - Hands folded



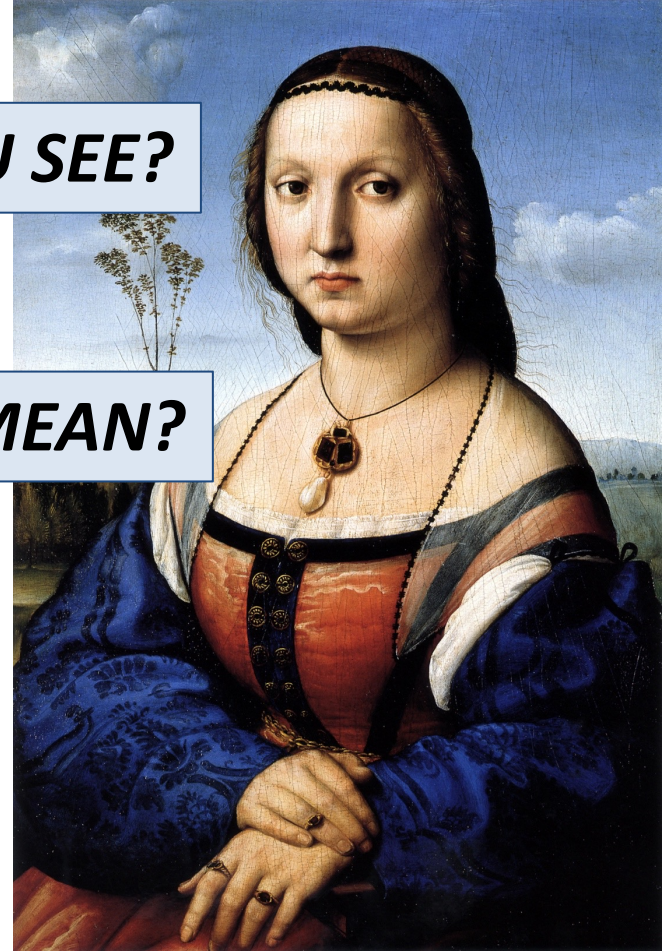
Leonardo Da Vinci *The Monna Lisa*

1503-1506 - Oil on wood panel

Louvre, Paris

**WHAT CAN YOU SEE?**

**WHAT DOES IT MEAN?**



Raffaello Sanzio *Maddalena's Strozzi portrait*

1506 - Oil on wood panel

Palatina Gallery, Florence

# Head and Face

*PUT THE MISSING WORD*

**Long Hair**

*CAN YOU REPEAT IT PLEASE?*



# Head and Face

*PUT THE MISSING WORD*

*CAN YOU REPEAT IT PLEASE?*



**Short Hair**

**Moustache**

**Beard**

**Shoulders**

**PUT THE MISSING WORD**



**Curly**



**Wavy**

**CAN YOU REPEAT IT PLEASE?**



**Straight**  
**Long**

**Short**

